

Sap Flow Tool Quick Start Guide

Dear Customer,

Thank you for your recent purchase of the ICT International Sap Flow Tool. Please use this guide to identify the HID and ID numbers, required for registration, and how to register the product.

Part 1: Locating HID & ID Numbers

The numbers can be found on the back of the CD case (Figure 1).



(Figure 1. HID and ID numbers listed on back of CD case).

If your CD cover is lost, or the numbers are missing, please refer to the below steps to identify the HID and ID numbers.

1. The ID number is found inscribed on the lip of the dongle (Figure 2).



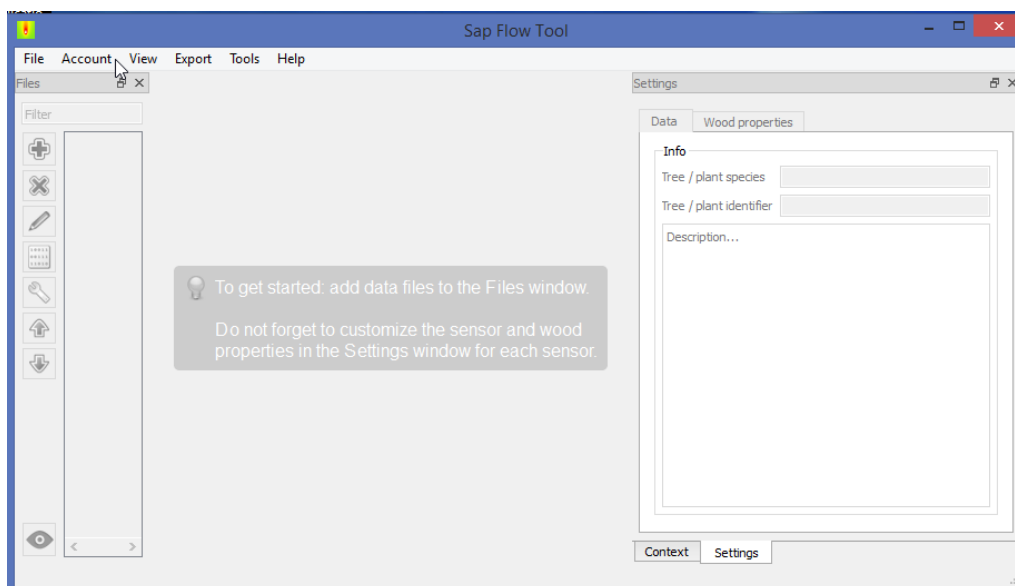
(Figure 2. The ID number is found inscribed on the dongle).

2. Connect the dongle to the computer.
3. Click “Cancel” to open software (Figure 3).



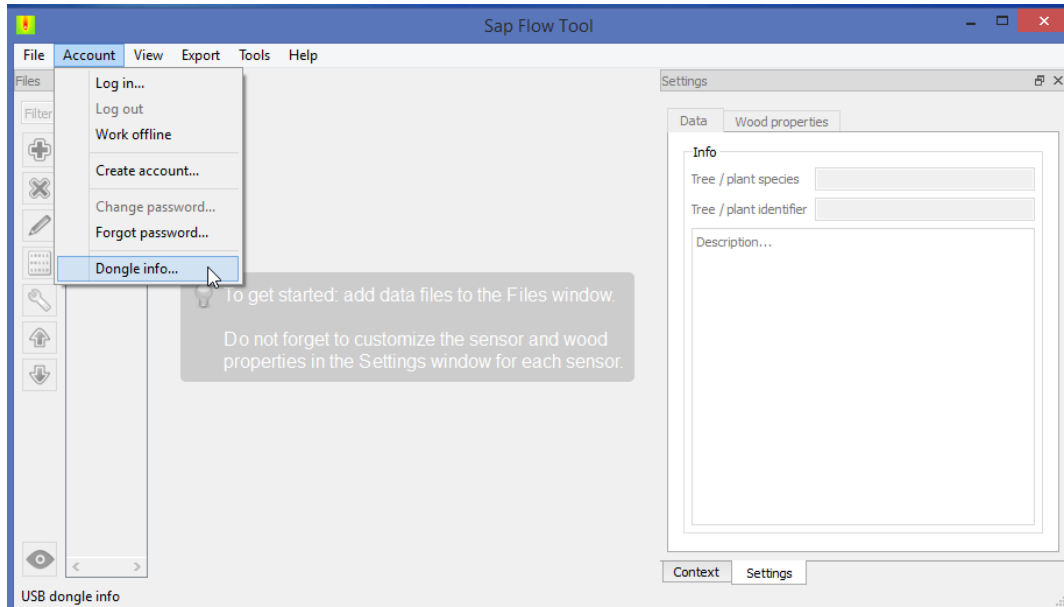
(Figure 3. Click “Cancel” to open software).

4. At the main screen click on the “Account” tab (Figure 4).



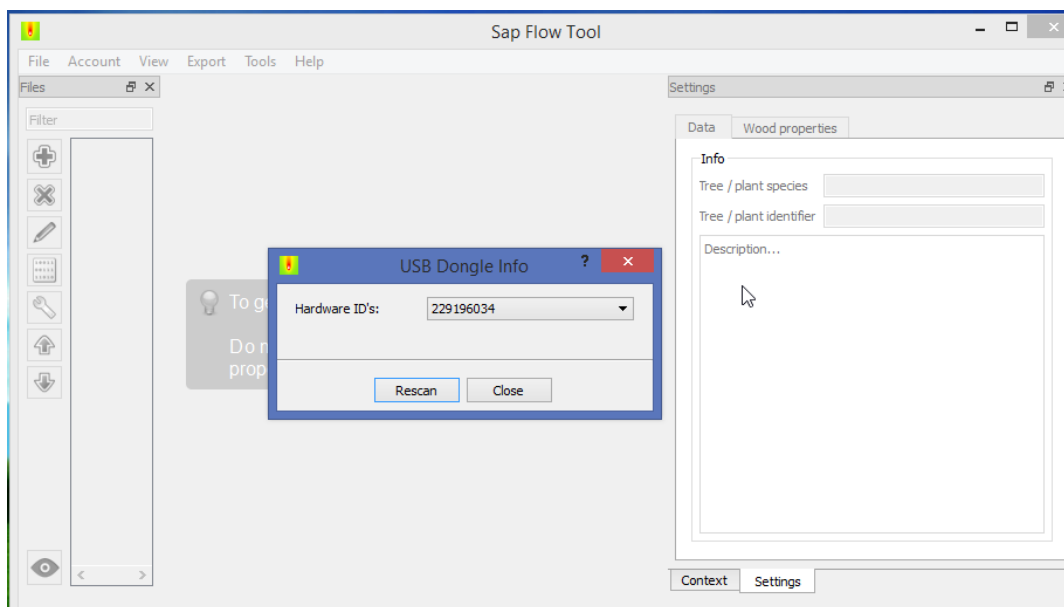
(Figure 4. Click on “Account” tab).

5. On the “Account” drop-down menu, click on “Dongle info...” (Figure 5).



(Figure 5. Click on “Dongle info...”)

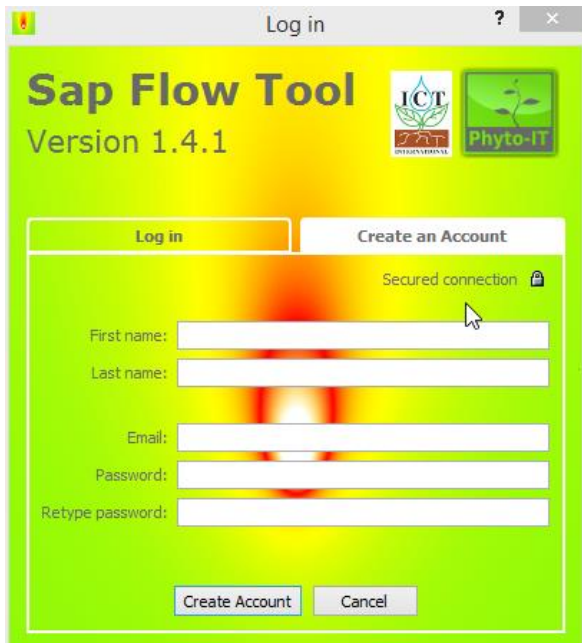
6. The “Hardware ID’s” or HID number, will be displayed in the box. If it is not please click on “Rescan” to see it. If the HID number is still not displayed, please check that the dongle is correctly inserted and click “Rescan” to make it appear. (Figure 6).



(Figure 6. HID number will be displayed).

Part 2: Registration Process

1. Open up “Sap Flow Tool Software”. This will bring up the registration/log in menu. Click on the “Create an Account” tab



The screenshot shows a web browser window titled "Log in" for the "Sap Flow Tool" software, version 1.4.1. The interface has a green and yellow background. At the top right, there are logos for ICT International and Phyto-IT. Below the logos, there are two tabs: "Log in" and "Create an Account". The "Create an Account" tab is selected. The form includes a "Secured connection" indicator with a lock icon. The input fields are: "First name:" (empty), "Last name:" (empty), "Email:" (empty), "Password:" (empty), and "Retype password:" (empty). At the bottom, there are two buttons: "Create Account" and "Cancel".

(Figure 7. Sap Flow Tool Software registration)

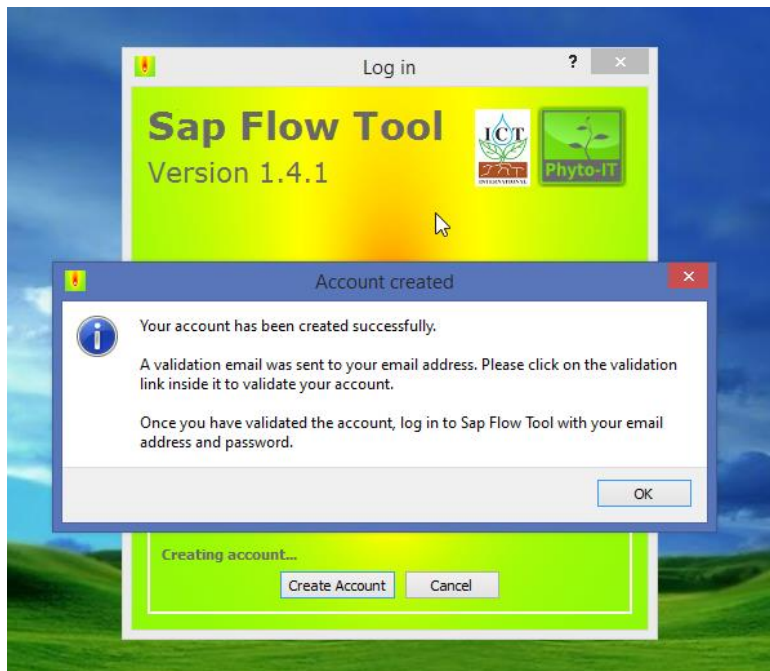
2. Fill in your details, and create a password. Click on “Create Account” (Figure 8).



The screenshot shows the same "Sap Flow Tool" registration form as in Figure 7, but with the "Create an Account" tab selected and the input fields filled out. The "First name:" field contains "Allan", the "Last name:" field contains "Marsh", the "Email:" field contains "dispatch@ictinternational.com.au", and both the "Password:" and "Retype password:" fields are filled with ten dots. The "Create Account" and "Cancel" buttons are visible at the bottom.

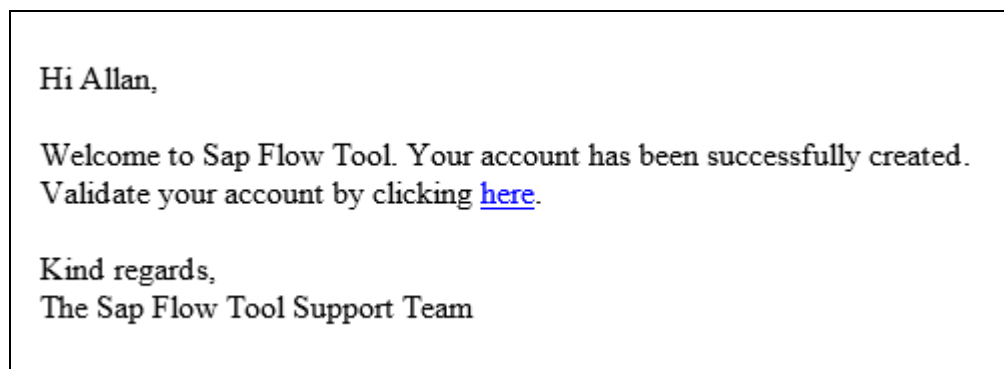
(Figure 8. Input details to create account).

3. You will receive confirmation that your account has been successfully created (Figure 9).



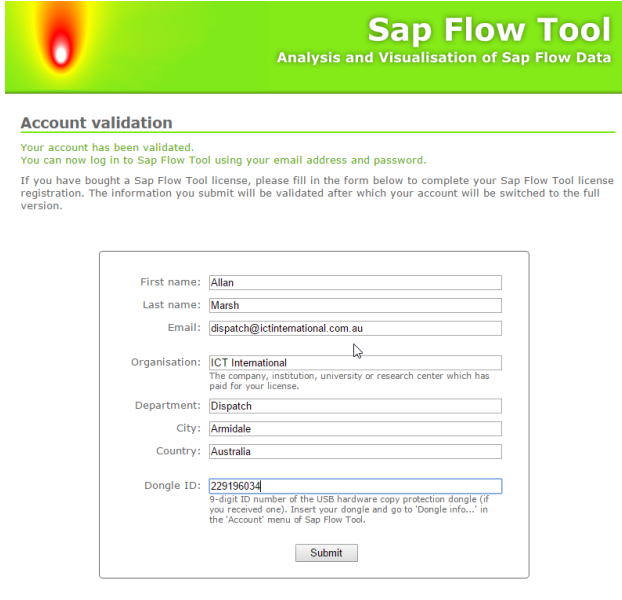
(Figure 9. Account confirmation).

4. You will also receive a confirmation email, to the address you inputted during your registration. Click on the “here” section to confirm your registration (Figure 10).



(Figure 10. You will receive the confirmation email).

5. The “here” link will take you to “Account validation” screen to input your “organisation,” “location,” and “Dongle ID.” (Figure 11).



Sap Flow Tool
Analysis and Visualisation of Sap Flow Data

Account validation

Your account has been validated.
You can now log in to Sap Flow Tool using your email address and password.

If you have bought a Sap Flow Tool license, please fill in the form below to complete your Sap Flow Tool license registration. The information you submit will be validated after which your account will be switched to the full version.

First name:

Last name:

Email:

Organisation:
The company, institution, university or research center which has paid for your license.

Department:

City:

Country:

Dongle ID:
9-digit ID number of the USB hardware copy protection dongle (if you received one). Insert your dongle and go to 'Dongle info...' in the 'Account' menu of Sap Flow Tool.

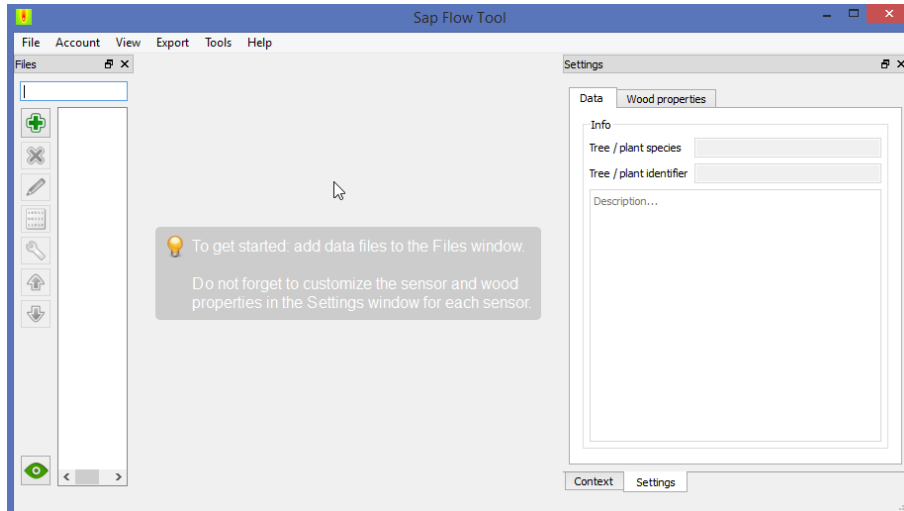
(Figure 11. “Account validation” details, including Dongle ID.

6. Go back to Sap Flow Tool Software and click “Create Account.” A confirmation screen, “Thanks for trying out Sap Flow Tool” will appear, which will grant you access to the software for 30 days. After the 30 days you will still have access to the software through your purchase (Figure 12).



(Figure 12. Confirmation that you have access to Sap Flow Tool Software.

7. The main page of Sap Flow Tool will open (Figure 13).



(Figure 13. The main page of Sap Flow Tool).

Part 3: Help and Support

For all other enquiries, and additional information on the use of the ICT International Sap Flow Tool Software, please contact your ICT sales representative or email “sales@ictinternational.com.au” or phone (+61) 2 6772 6770.